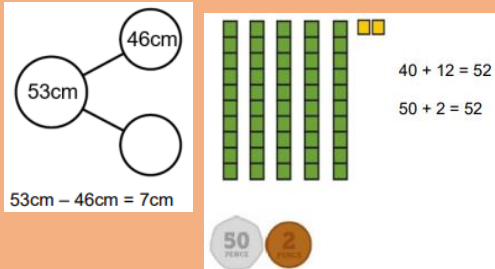
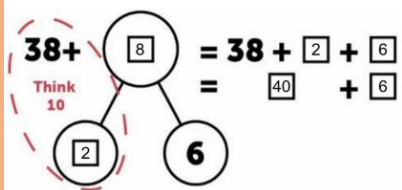
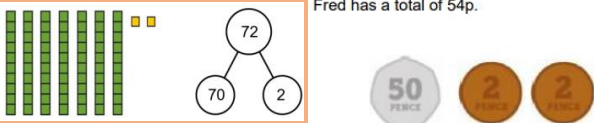


Year 2 Knowledge Map Term 2

Maths

Pence			Pounds		
1p 1 penny	2p 2 pence	5p 5 pence	£1 1 pound	£2 2 pounds	£5 5 pounds
10p 10 pence	20p 20 pence	50p 50 pence	£10 10 pounds	£20 20 pounds	£50 50 pounds

Fred has a total of 54p.



Practise your number bonds to 10.

Rainbow to 100



0+100=100	100+0=100
10+90=100	90+10=100
20+80=100	80+20=100
30+70=100	70+30=100
40+60=100	60+40=100
50+50=100	50+50=100



Play TTRS for at least an hour a week.

P.E

Y2 PE days are on a Monday and a Wednesday.
Please come to school dressed in your P.E kit.



Key Dates

- 8th Nov – School photos
- 10th Nov/20th Dec – Mufti days
- 16th Nov – Yr 2 Storytime
- 6th Dec – Yr 2 film night
- 13th Dec – Pantomime
- 19th Dec – Christmas jumper day and Yr 2 Christmas assembly

children
Christmas
class
climb
clothes
cold
could
door
even
every

Practise reading and spelling these words at home.
See how many you can learn off by heart!

English

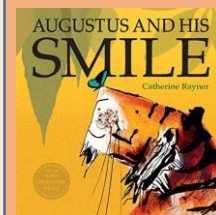


We will be writing a set of instructions for 'How to look after a ghost'. We will be using conjunctions to join our ideas.

What do you think makes a good friend?

Conjunctions – and so but or

A B C capital letters	 finger spaces	 full stop	Read read it again
---------------------------------	-------------------	---------------	------------------------------



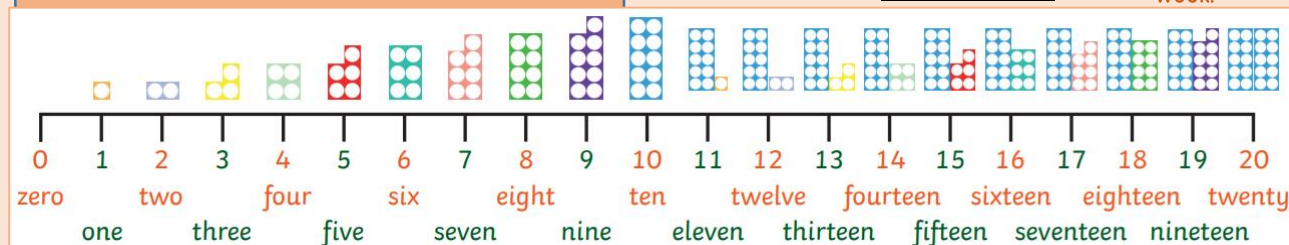
We will be working on reading with expression (prosody). We will also be planning and writing a story about tigers! We will use dialogue/speech to show how the main character is feeling.



How frustrating to be a Christmas decoration... trapped in a box for a whole year! We will be writing speech bubbles and letters in character. We will also be writing our own set of instructions.



Listen to a story.



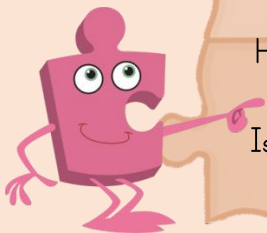
Year 2 Knowledge Map - Term 2

PSHE

We are celebrating...
differences.

How are we different from our friends?

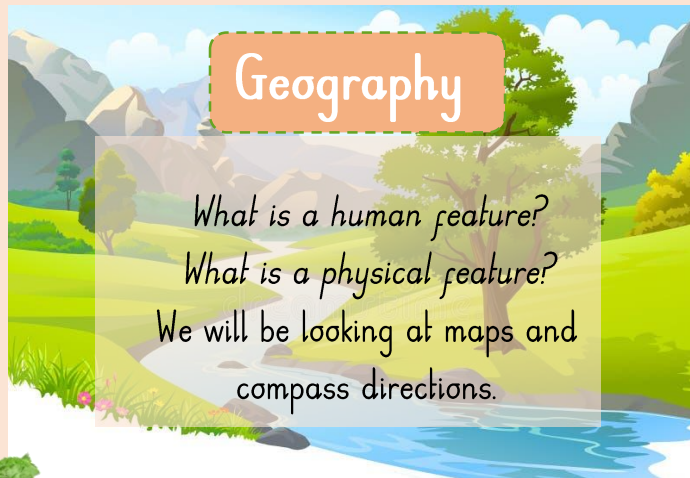
Is it ok to be different from others?



Remember to complete your weekly tasks on Spelling Shed! Your logins are now in your reading records.

Geography

What is a human feature?
What is a physical feature?
We will be looking at maps and compass directions.



SCAN ME

RE

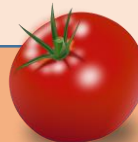
Why do Christians believe God gave Jesus to the world?

We will be looking at the Christmas story and start to explain that Christians believe Jesus was a gift from God.



D&T

We will be making a rainbow salad and thinking about what it means to be healthy.



SCAN ME

Music

We will be looking at instruments in the orchestra. We will learn how different characters can be represented by timbre, how emotions can be represented by pitch and how changes in tempo can convey actions.

Art

We will explore how colour and line can be used to express mood, movement and feelings. We will select colours and painting tools to make marks in our artwork.



Composition VII by Wassily Kandinsky (1913)