

# Year 1 Knowledge Map

We will be starting this term with looking at 'A Walk in London'. We will be exploring key landmarks of London and will begin to look at non-fiction texts alongside this book including maps too! The children will be building up to creating their own information book about London.

Find out more about London below:



Later on in the term we will be learning to write letters with the book 'Meerkat Mail'. We aim to widen our knowledge with these key animals before our trip to Woburn Safari Park.



We will continue to learn our Phase 5 phonics. Click on the QR code to visit our class website page to look at how we pronounce these sounds.

SCAN ME



## English

### Key Dates

Wednesday 6<sup>th</sup> March – Class Photographs

Thursday 7<sup>th</sup> March – World Book Day

Friday 15<sup>th</sup> March – Red Nose Day

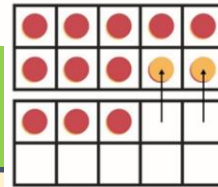
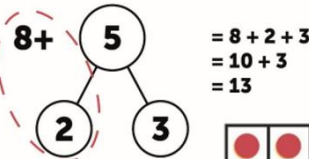
Friday 22<sup>nd</sup> March - Math's Morning (drop off until 9:30am)

Wednesday 27<sup>th</sup> March – Woburn Safari Trip



## Maths

In Maths we will be using our knowledge of 10 to help us bridge across 10 when adding and subtracting. The children be using their part whole models and 20 frames to do this.



We will continue to explore the part and whole with numbers to 20. The children will learn multiple ways of representing number and will be using bead strings, part whole models, ten frames and Cuisenaire rods to help.

Click on the QR code to find out more!

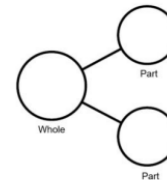


## PE

Our P.E. sessions will take place on a Tuesday and a Wednesday. Please come to school dressed in your PE kit.



Using these numbers, how many part whole cherry models can be made?



Which calculations can be written from these?

# Science

We will be revisiting our Animals including Humans unit in science. We will explore what features animals, mammals, amphibians and birds have. We will be observing different images of animals closely in order to classify a range of animals by their features.

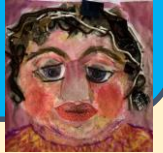
We will also be researching what different animals eat to determine whether they are a herbivore, omnivore or carnivore. We will explore what food tells us about different types of animals.



| Mammals             | Birds                      | Amphibians                     |
|---------------------|----------------------------|--------------------------------|
| warm-blooded        | warm-blooded               | cold-blooded                   |
| skin<br>fur or hair | feathers<br>wings<br>beaks | skin<br>water in and out       |
| live young          | eggs<br>with shells        | soft eggs<br>spawn             |
| breathe air         | breathe air                | breathe underwater<br>then air |

# Art

In this unit we will explore methods of manipulating fabric and yarns by poking, pulling, threading and weaving. We will then use careful control to work with oil crayons and paint when exploring pattern making. Finally we will combine materials to create colourful and textural effects before evaluating our work.



# Geography



In geography we will be learning about maps and how they show us the physical and natural features of an area. We will also be using simple fieldwork and observational skills to explore our school grounds. We will then be creating our own maps of the school and labelling the key features so the children can navigate their way to different destination!



SCAN ME

# Computing

In this unit we will be learning how to program Bee-Bots. We will be learning what each of the function buttons do and how we can sequence movements by giving the Bee-Bots commands to move within a planned route.



# Music

In this unit, through fairy tales, children are introduced to the concept of timbre; learning that different sounds can represent characters and key moments in a story. They explore clapping along to the syllables of words and phrases before creating rhythmic patterns to tell a familiar fairy tale.



# PSHE

We will start to explore and understand the difference between being healthy and unhealthy. Then we will discuss ways to keep ourselves healthy and begin to feel good about the healthy choices we make.



# Religious Education

We will be learning ways that Jesus is special to Christians and how His welcome on Palm Sunday shows this.



# D & T

With this unit we will be identifying a range of construction materials. Then we will investigate how materials can be changed by adding heat or water. At the end of the unit we will be using a combination of materials to create a building similar to that of one of the London landmarks!



SCAN ME