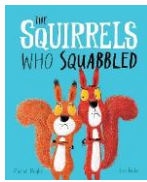
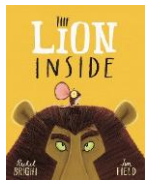
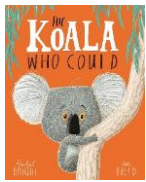


Year 3 Knowledge Map Term 2

English

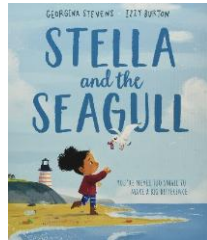
In this half term, we will be exploring fables and hidden morals within them, including a few written by Rachel Bright. Scan the QR code below to explore other fables! What stories and morals are you familiar with?



SCAN ME

Within our fable writing, we will be developing various features to help us add detail and entertainment into our writing. This will include using skills such as subordinating conjunctions, prepositions and expanded noun phrases.

Our next topic will be developing our persuasive techniques, using the story of Stella and the Seagull to inspire us. This will include creating persuasive posters and a persuasive speech on a given topic!



Scan the QR code to hear the story of Stella and the Seagull.

SCAN ME

Dates for the Diary

Year 3 Strings Performances - Thursday 27th November (2.15-3.00pm)
Tasty Treats - Thursday 4th or Friday 5th December.
Year 3 Christmas Assembly - Wednesday 10th December (9.15am)
KS2 Christmas Movie Night - Wednesday 10th December (3.00-4.30pm)
Christmas Dinner and Jumper Day - Thursday 11th December
KS2 Pantomime at the Royal & Derngate - Wednesday 17th December
Non school uniform day - Friday 19th December

French

How will we turn different shapes into art? By using our understanding of French of course!



carré



cercle



triangle



rectangle



Spelling Shed

Spellings

Have you played your spelling games? The assignments will change weekly to match the spelling rules you have been learning!

century

certain

circle

complete

consider

continue

decide

describe

different

difficult

disappear

early

earth

eight

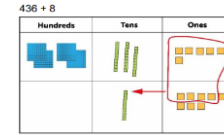
eighth

RE

We will be enquiring what the most significant part of the Nativity story is for Christians today.

Maths

We will be using our recently learnt mental strategies to help solve trickier calculations. We will also be learning formal written methods to solve addition and subtraction calculations.

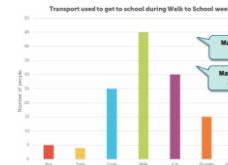


6 ones and 8 ones make 14 ones.
14 is one ten and 4 ones.

$$\begin{array}{r} 436 \\ + 8 \\ \hline 444 \\ \hline 1 \end{array}$$

I regrouped 10 ones for 1 ten.

After this, we will be developing our statistics skills by interpreting tables and bar charts!



Make a true statement about this graph.

Make a false statement about this graph.



I can see letters on the lines.

Line AB is perpendicular to line CD because they meet at a right angle.

The lines meet at a right angle.

Towards the end of the term, we will be moving onto geometry, where we will be looking at different types of angles and lines, such as perpendicular and parallel!

Have a go at playing 'Risky' at home to help with our mental addition. All you need is a pack of playing cards and the QR code across for the rules!



Don't forget to keep working hard to quicken your recall of times tables facts! Have you been a Rock Star recently? It is recommended that all children should be using TTRS for at least one hour per week.

Our PE Days will remain on a Tuesday (indoor) and Wednesday (outdoor), please ensure you are wearing the correct PE kit and warmer clothing on colder days. Please also ensure that jewellery is removed where possible for PE days if your child is not yet able to independently.

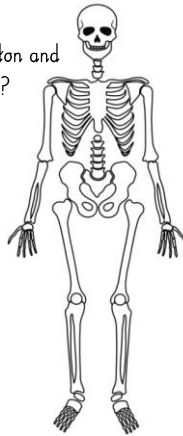
Science

In Science this term, we will be expanding on our learning from Year 2 about animals, including humans. We will be answering important questions about our body, such as:

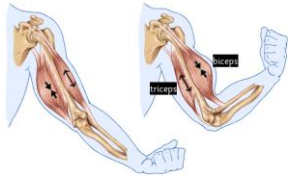
What affect does food have on our body?



What is a skeleton and what does it do?



What are muscles and how do they work?



Scan here to learn more with BBC Bitesize:



Design Technology

Connecting to our Science learning this half term, we will consider what a balanced diet is. We will be exploring how seasonality affects our diet, alongside identifying the nutritional values of foods such as popcorn and potatoes.



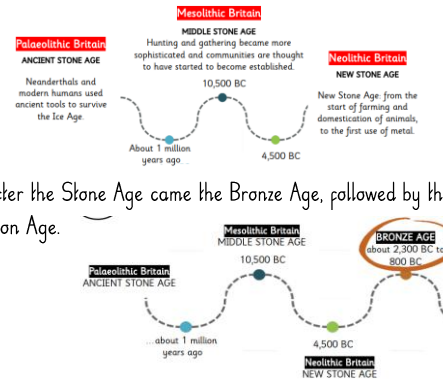
DIY popcorn



Homemade chips

History

This term, we will be continuing our prehistoric journey: The Stone Age, to the Iron Age. Did you know there are three periods of time that belong to the Stone Age?



After the Stone Age came the Bronze Age, followed by the Iron Age.

We will learn about what life was like during these times and how technological advances made life different for people in Britain. What do you think the below images are showing and what period do you think they are from?



Scan me for a link to BBC Teach videos related to the Stone Age:



Art and Design

During the art lessons, we will experiment using a range of marks that can be made through printing. We will make their own printing blocks and print on different surfaces.

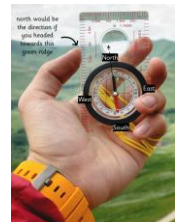


We will look at the work of artist Neil Bousfield. Neil creates reduction and multi-block engravings with subtle overlays of printed colour, tone and pattern. He lives and works on the North Norfolk coast where he makes engravings concerned with the local fragile landscape near to his home under threat of sea incursion. His work will inspire our prints.



Geography

In our geography learning this term, we will be developing our map and fieldwork skills. We will be identifying the 8 points on a compass and using this to identify physical and human features located within an area.



PSHE

This half term, we will be celebrating differences, particularly families and the similarities/differences between them. This will also include discussing ways to resolve conflicts and solutions.

