

# Year 6 Knowledge Map – Term 5

## Maths



Log in to battle for your band! It is recommended that you should be using TTRS at least one hour per week!

This term, we will be revising everything we have learnt in maths during our lessons this year. We will be revising:

- Number and Place Value
- Calculations (Four Operations)
- Fractions, Decimals and Percentages
- Ratio and Proportion
- Algebra
- Measurement
- Geometry (Properties of Shapes; Position and Direction)
- Statistics

Scan here to access some practice SATs math's questions!



Scan to play a game to help you practice your spelling, grammar and punctuation skills on BBC Bitesize!



Scan here to play a Maths game on BBC Bitesize!



## Key Dates

- 23<sup>rd</sup> April – Class Photos
- 27<sup>th</sup> April – Spencer Maths Morning
- 28<sup>th</sup> April – Tull Maths Morning
- 29<sup>th</sup> April – Crick Maths Morning
- 11<sup>th</sup> - 15<sup>th</sup> May - SATs + Breakfast Club
- 22<sup>nd</sup> May – School Closed for Training Day
- 1<sup>st</sup> - 5<sup>th</sup> June – PGL residential

Scan for access to the maths games that we play in lessons!



## English

This term, we are going to be learning how to write a narrative. To do this, we will be using the text 'Street Child' to describe settings, characters and atmosphere.

We will be learning how to use dialogue to convey action and to build cohesion across and between paragraphs. In addition, we will be continuing to work on our editing and revising skills. Click on the link to find some top tips!



Key Vocabulary	
pauper	a very poor person
coaxed	to be persuaded or lured in
vaguely	uncertain, unclear or roughly
gruel	a thin, water porridge
infirmary	a place to care for the ill or dying
cholera	infectious, often fatal disease passed on through dirty drinking water. Many died of this in Victorian times.
scullery	a room joined to a kitchen
bramble	a prickly bush or shrub
taut	pulled or drawn tightly
lumber	to move with heavy clumsiness

Click here to the listen to the first few chapters of Street Child 😊



Spelling – learn these statutory spellings and try to use them in your writing.

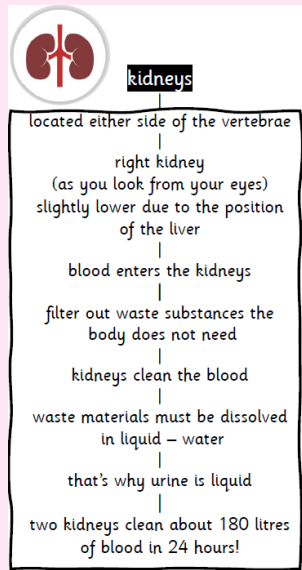
- |           |            |  |         |
|-----------|------------|--|---------|
| queue     | restaurant | shoulder                                       | soldier |
| recognise | rhyme      | signature                                      | stomach |
| recommend | rhythm     | sincere(ly)                                    |         |
| relevant  | sacrifice  | <b>Scan for access to Spelling Shed games!</b> |         |
|           | secretary  |  |         |



SCAN ME

# Science

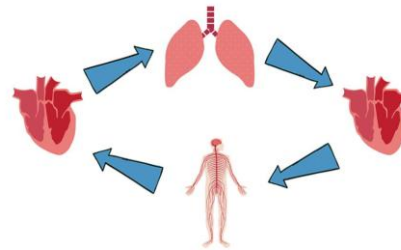
In science, we will be exploring and learning about water transportation. To begin with, we will recap our learning on the circulatory system and the digestive system to learn about how the two systems are connected. Then, we will explore the functions of the kidneys and how they keep us healthy.



Did you know two kidneys clean about 180 litres of blood in 24 hours?  
Click the link to learn more about kidneys!



The mammal circulatory system looks like this:



Heart - Lungs (pick up oxygen) - Heart (again) - Rest of your body (to drop off the oxygen) - Heart (again)



# PSHE

This term we will be focusing on the topic of 'Relationships'. We will also be exploring how to promote and maintain our mental health and be looking at grief and the stages and ways of coping. Technology forms such a large proportion of our lives so we will be exploring ways we can stay safe when online and how to use the internet sensibly.

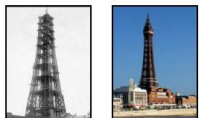
# Design & Technology

## How strong is a piece of spaghetti?

We will be investigating this question during our DT learning this term. The children will test their theories by exploring and building 3D structures using spaghetti and marshmallows to increase strength and stability. Over the unit, we will explore different architectural structures to inform our choices!

### Connections:

Blackpool Tower  
by architects  
James Maxwell  
(1838 – 1893) and  
William Charles Tuke  
(1843 – 1893)



# Art

We will be exploring the work of the artist and illustrator Chris Riddle who uses a range of different mark making techniques in his compositions. In addition to this, we will be looking at Frida Kahlo and creating our own self-portraits focused on symbolism.



Click here to learn about Frida Kahlo!

SCAN ME



# SATs Support

Scan this QR code to use the BBC Bitesize website to support your child's learning of key concepts for maths and SPAG in preparation for SATs. We will continue to revise key concepts over the next few weeks and are encouraging the children to tell us about any areas they find challenging so we can support them. If you have any questions please speak to your child's class teacher.



SCAN ME